

Office Depot - Productivity analysis and reporting database application “dbPAR”.

Client: Office Depot, Western Region Distribution Center 1078, Kent WA.

Contract: July – September 2011, through SmartTalent, Kent WA.

Contact: Robert Miller, Market Lead, OfficeDepot

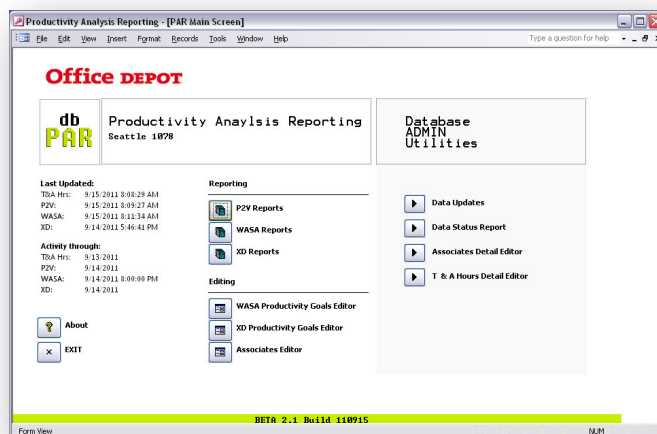
Results: Highly successful custom BI tool for the analysis and reporting of blended data, enabling evidence-based improvements in operational efficiency and worker productivity.

Users: DBAdmin + 15-20 top and mid-level managers.

Scope: Business Analysis, Data analysis; multi-user user database application development; automated data import and normalization routines for multiple data sources; data input UI; data analysis, reporting, documentation and DBA training.

Hours: Approx. 250 hrs, 1 person FT on-site, 6 weeks.

Technology: MS Access 2003, ODBC, SQL, VBA.



WASA - Report 3
Productivity by Zone, per Month, per Associate
Seattle 1078

Page 1 of 9
Report Date: 8/11/2011

August, 2011

Associate Zone	Zone Hours	Cartons	CPH	CPH Goal	CPH Variance
BREAKDOWN	93.730	50,384	537.5		
BD01 - Stat Breakdown	93.730	50,384	537.5	380	141.5%
August 2011	93.730	50,384	537.5	380	141.5%
Lorene Walsh U46291A	2.94	3,205	1,091.8	380	287.3%
Shawna Fitch U66291S	22.00	20,442	929.0	380	244.5%
Shanda Chun U13291A	20.92	10,590	506.2	380	133.2%
U08291S	0.05	20	384.6	380	101.2%
Stacey Saaphahn U09291A	23.97	8,189	341.6	380	89.9%
Niel Enger U02291S	23.80	7,935	333.4	380	87.7%
Fernando Flores U01291A	0.05	3	61.2	380	16.1%
BULK/PICK	275.552	25,314	91.9		
B45A - 45A	2.576	291	113.0	75	150.6%
August 2011	2.576	291	113.0	75	150.6%
Naiveen Chand U40291A	2.58	291	113.0	75	150.6%
B45B - 45B	3.434	331	96.4	75	128.5%
August 2011	3.434	331	96.4	75	128.5%
Naiveen Chand U40291A	3.43	331	96.4	75	128.5%
B65A - 65A	24.959	1,647	66.0	65	101.5%
August 2011	24.959	1,647	66.0	65	101.5%
Tami Uyano U47291A	1.54	132	85.6	65	131.7%
U01291U	6.37	518	81.3	65	125.1%
Nate Tripp U48291A	17.05	997	58.5	65	90.0%

Description:

Office Depot’s regional distribution center management sought to improve its capabilities for measuring, analyzing and reporting internal supply chain data and workforce productivity. Having several sophisticated, though aging, scanning and tracking systems in use, Office Depot engaged me to define and develop an Access database application that would collect and normalize the various data, and provide a level of visibility into the data not currently available to them.

Working with the lead department managers, I began by analyzing business needs, establishing data requirements, developing an end-user application prototype and creating report mockups. We established a standard for reports that delivers a comprehensive measure of day-to-day productivity, velocity and balance, with varying degrees of detail and specificity which are equally suitable for lower, upper and corporate level managers.

BETA was completed in just 4 weeks, and enhanced incrementally.

- Automated routines for data import and processing from multiple ODBC data sources, and routines to purge expired data (VBA).
- Separate back-end databases (MDB) to accommodate storage of large amounts of data and provision for additional data sources.
- Local tables storing normalized data, manually input data and look up values.
- UI (MS Access forms) for DBAdmin, editing, and read-only users.
- Output (MS Access queries and reports) with extensive end-user filtering options and dynamic highlighting.