

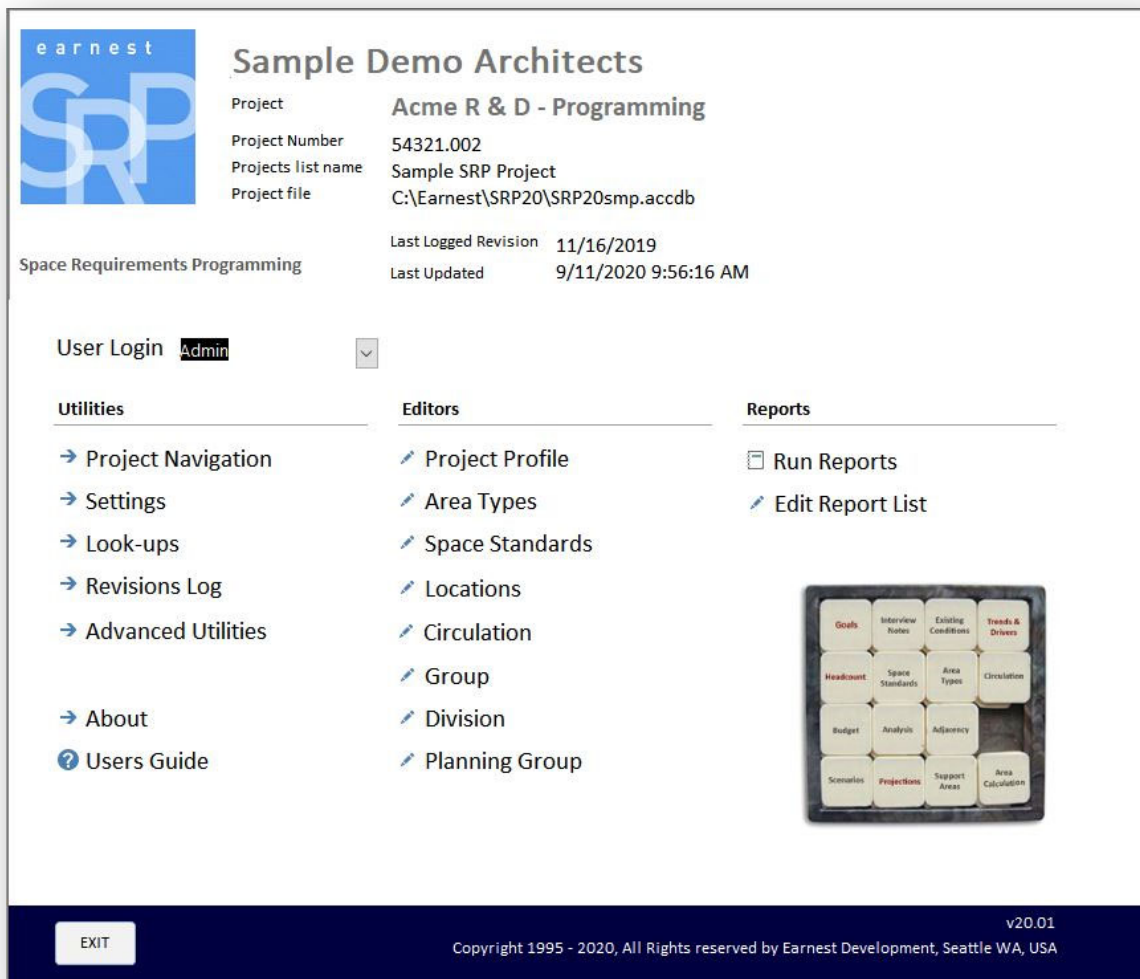
What's New in Earnest SRP v20

If you have been using an earlier version of **Earnest SRP** the enhancements added in v20 will be **exciting news!**

One of the most significant changes in **SRP 20** is that it has been upgraded for **compatability with MS Office 64 bit platforms**, including **Windows 365**. It remains compatable with 32 bit platforms too, and with your project files from earlier versions of **SRP**.

Earnest SRP has also been given an updated, fresh new look, and the editors now stretch up and down for larger monitors. We've of course added feature enhancements, configuration options and reports.

What hasn't changed is the way you can create **beautiful deliverables easily and efficiently**.



Growth Applied by Percentage

We've improved the interface and calculation methods for automatically generating quantities and staff for projected planning dates.

Growth Applied by Percentage

Select Planning Group(s) to Include in the update (hold down Shift key or Ctrl key to select multiples).

Include

100 Corporate R&E

ANR Analysis & Reporting

AP Accounts Payable

AR Accounts Receivable

GL General Ledger

HR Human Resources

MA Management & Administration

MKTA Market Analysis

MOA Mail Operations & Admin

MP Mail Processing

PD Product R & D

PT Product Testing

SMA Sales & Marketing Admin.

SP Special Projects

SP01 Special Projects

SS Services and Support

>

>>

<

<<

Refresh

2007 6000

Exclude

Special Projects ABC

Unit 6000

Edit Settings

Hide

Label

Number of years from Base PIDt

PIDt1 (Base)

☒

2021

PIDt 2

☒

MoveIn

0

PIDt 3

☒

2025

6

PIDt 4

☒

2030

11

Unit of Measure

Decimal Places

Quantity

0

Headcount

0

Refresh

Percentages to be applied, by Area Type.

		Base Quantities		Percentage Growth	
		Quantity	Headcount	Quantity	Headcount
1	Private Office	62.50	60.50	5%	10%
2	Flexible Workplaces	117.00	190.50	0%	15%
3	Collaboration	14.00	0.00	0%	10%
4	Support	8.00	1.00	0%	0%
6	Equipment	12.00	0.00	10%	0%

Assign percentages for each Area Type to calculate cumulative growth for projected plan dates.

Execute

Close

213.50

252.00

5

earnest development | Seattle WA USA | 206.622.1950 | earndev@earnestdevelopment.com

Reports

More Reports! There are now **47 standard reports** to choose from and with the new matrix it's easier to choose which reports are best for your project.

Show / Hide Budget values! When you run the Space Standards reports you can now choose to Show or Hide Budget fields.

EARNEST SRP

Report Filtering

Space Standards

Select one or more filters for the report, blank for "All"

Space Type

Space Standard

Show Budget data ☐

Filtering description:
(displayed below the report title)

Close

Favorites! You can now designate which reports are pertinent to your project, and filter down the list to make it easier for your team to choose the right ones.

1. In the **Reports List Editor**, designate which reports you want as '**Favorites**'
2. In the **Reports screen**, check the '**Favorites**' checkbox to filter, uncheck it to see all. In addition you can filter between Landscape and Portrait reports.

Earnest SRP

Reports List Editor

Class	Sort	FAVORITE	Report Title	Description / Remarks
	0	<input checked="" type="checkbox"/>	Space Requirements Worksheet	Programming interview worksh
L	1	<input checked="" type="checkbox"/>	Project Profile	Project profile, with project leve
L	2	<input checked="" type="checkbox"/>	Program Analysis Report	Totals and Analysis of Program
L	3	<input checked="" type="checkbox"/>	Executive Summary	Top level summary with project
L	3.3	<input checked="" type="checkbox"/>	Executive Summary	Top level summary with AREA,
L	4	<input checked="" type="checkbox"/>	Program Headcount	Detail with notes; HEADCOUNT
L	5	<input checked="" type="checkbox"/>	Concise Summary	Concise with notes; HEADCOU
L	5	<input checked="" type="checkbox"/>	Program Summary	Summary with notes; HEADCC
L	6	<input checked="" type="checkbox"/>	Program Specifics	Detail with notes; HEADCOUN

'Favorites' for the reports list.

Earnest SRP

Reports

Filter - Orientation: ☒ Landscape ☐ Portrait ☒ * FAVORITES

Fltr	Sort	Title	Description
L	0	Space Requirements Worksheet	Programming interview worksheet
L	1	Project Profile	Project profile, with project level notes & revisions log
L	2	Program Analysis Report	Totals and Analysis of Programmed SPACES AREA HEADCOUNT
L	3	Executive Summary	Top level summary with project notes; HEADCOUNT AREA
L	3.3	Executive Summary	Top level summary with AREA, Circulation, HEADCOUNT, Area per Person, and
L	4	Program Headcount	Detail with notes; HEADCOUNT only
L	5	Concise Summary	Concise with notes; HEADCOUNT AREA
L	5	Program Summary	Summary with notes; HEADCOUNT AREA
L	6	Program Specifics	Detail with notes; HEADCOUNT AREA
L	7	Space Requirements	Detail with notes, grouped by Area Type; SPACES AREA HEADCOUNT
L	8	Program Report	Detail, One Plan Date, notes at right, grouped by Area Type; SPACES AREA HE
L	9	Program Detail Report	Detail with notes; SPACES AREA HEADCOUNT
L	10	Space Standards Index	Space standards list, sorted by Space Type and Code.
L	11	Space Standards	Space standard detail with image and notes, one per page
L	12	Space Standard Quantities	Quantification summary, standards grouped by Space Type
L	13	Space Standard Distribution by Area Type	Space Standards grouped by Area Type; SPACES AREA
L	14	Space Standard Distribution by Space Type	Space Standards breakdown by Area Type and planning group
L	15	Space Standard Distribution by Planning Group	Space Standard counts by planning group
L	20	Space Planning Report	Space Standard breakdown by Proposed Location and planning group.
L	22	Summary by Location	Program summarized by Proposed Location; AREA HEADCOUNT
L	23	Budget by Space Standard	Budget based on Space Standard quantities
L	24	Budget by Area	Budget based on Area projections
L	25	Program Detail	Detail with notes; HEADCOUNT and QUANTITY only
L	36	Summary By Area Type	Summary of Area incl. Circ and Headcounts, grouped on Area Type, all planning
L	37	Headcount Growth Report	Headcount Summary with % growth by planning date
L	38	Ratios by Space Type	Ratio of Quantity to Staff, grouped by Space type

Report Date Format: d mmm, yyyy | Page Number Prefix: | Show Planning Dates: ☒ 2021 ☒ MoveIn ☒ 2025 ☒ 2030

Report Date: 4/1/2019 | Page number format: Page 1 of 2

Use Today's Date: ☒ 9/9/2020 | Starting Page Number: 1

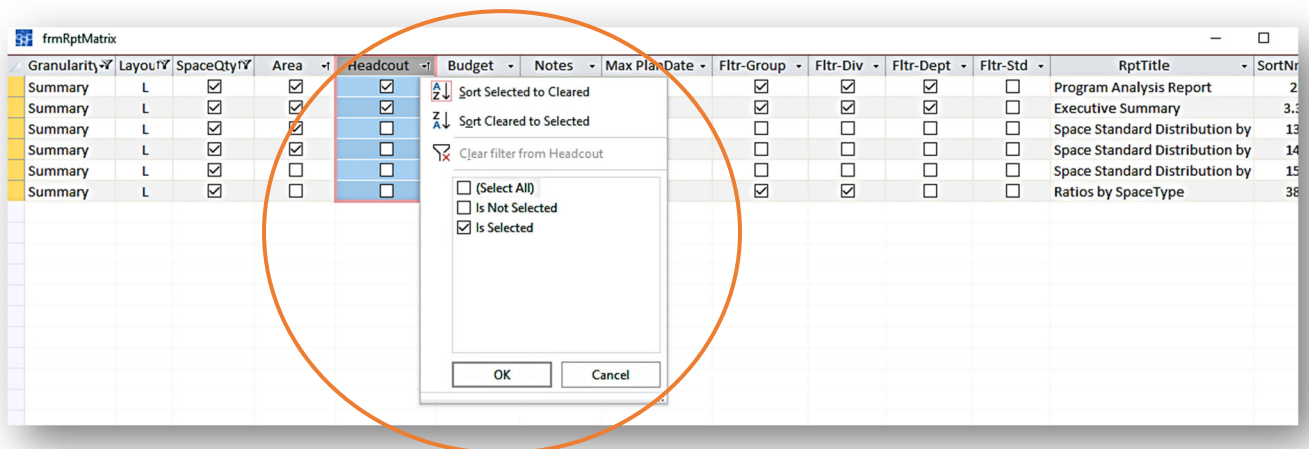
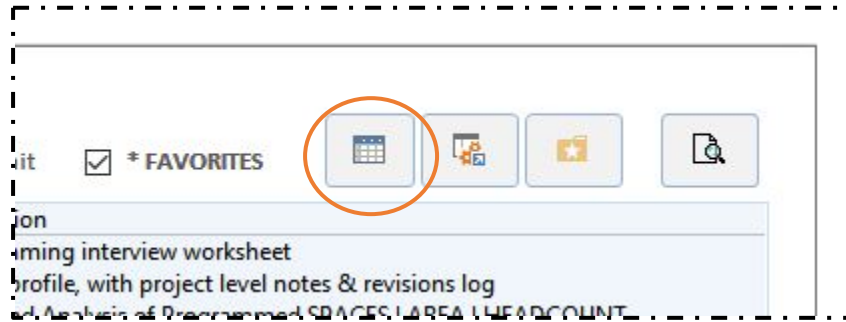
Message stamp: SAMPLE REPORT

Close

Report Features Matrix

You can now see which features are available in each report (such as whether Headcount is included)

1. Sort by any feature (column).
2. Filter the list down to the features you need to find which report to run.



Some of the newest reports

Acme Research and Development Complex

New York, NY
40037.02

Project Profile

Project	Acme R & D - Programming	Client	Acme Corporation
Number	54321.002	Contact	Joe Acme Jr.
Facility Name	Acme Research and Development Complex	Address	123 Spring Street, Suite 4600 New York, NY
Location	New York, NY	Phone	212.234.5689
Project Type		Fax	
Constr. Type	New Construction	Email	joeacme@acme.com

Team

Database Owner	Sample Demo Architects	Joe Data
Building Architect	LFA Associates	H. Roarke
Interior Design	Joseph Waterford, Esq.	A.J. Sample, Principal
Furniture Consultant	Meekum Inc.	

Critical Dates

Critical Dates	Start	Complete
Project Duration	9/1/2018	10/1/2019
Interviews	4/1/2018	4/15/2018
Documentation	4/15/2018	4/30/2018
Review & finalize Program	5/1/2018	5/30/2018

Basic Overview

Acme Industries is a major participant in the strongest, most vibrant capital markets in the world, operating across various businesses and geographies. A leading global financial services firm with assets of \$700 billion. The firm is a component of the Dow Jones Industrial Average.

The wholesale businesses operate globally under the Acme Industries brand. Clients include the world's most prominent corporations, governments, wealthy individuals and institutional investors. Acme Industries businesses encompass:

Investment Bank
Investment Management & Private Banking
Treasury & Securities Services
Acme Industries Partners
Commercial banking for Middle Market Clients

The retail financial services franchise operates under the corporate brand. Customers include more than 30 million individuals and small businesses across the United States. Corporate products and services encompass:

- Consumer Banking
- Investments
- Insurance
- Small Business Services
- Credit Cards
- Home Finance
- Auto Finance
- Education Finance

Growth

In 2019, Acme Industries Investor Services announced the creation of a technology, accounting and securities processing center of excellence in Dallas, Texas to expand its geographic presence and provide additional capacity to support business growth. Investor Services, which now has about 1,400 employees at its new state-of-the-art technology and processing facility in Dallas, is continuing to expand its operations and is paving the way for more growth down the road.

Trends

Leadership from a business perspective is also equally important. We have to think about driving our key businesses to leadership positions. It's the leadership positions of businesses that create

Acme Research and Development ComplexNew York, NY
40037.02**Headcount Growth Report**

		Headcount (Growth)							
		2021		MoveIn		2025		2030	
100	Finance								
2007	Special Projects ABC	0	0	0%	0	0%	0	0%	
ANR	Analysis & Reporting	8	8	0%	8	0%	8	0%	
AP	Accounts Payable	7	7	0%	11	80%	23	100%	
AR	Accounts Receivable	8	8	0%	16	100%	34	110%	
GL	General Ledger								
1000	Summary Group								
SP01	Special Projects								
200	Research & Develop								
PD	Product R & D								
PT	Product Testing								
300	Sales & Marketing								
SMA	Sales & Marketing Ac								
SS	Services and Support								
WRS	Western Region Sale								
400	Information & Tech								
MA	Management & Admin								
500	Real Esatate								
100	Corporate R&E								
600	Investor Relations								
MOA	Mail Operations & Ad								
MP	Mail Processing								
900	Acquisitions								
MIKTA	Market Analysis								
SP	Special Projects	2	2	0%	2	0%	2	0%	
999	Operations Admin								
8000	Unit 8000	11	11	0%	11	0%	11	0%	
HR	Human Resources	14	14	0%	42	200%	104	150%	

Acme Research and Development Complex

New York, NY
40037.02

earnest development

13 Apr, 2021
Page 1 of 2
SAMPLE REPORT**Acme Research and Development Complex**New York, NY
40037.02**Headcount Growth Report**

		Headcount (Growth)							
		2021		MoveIn		2025		2030	
100	Finance								
2007	Special Projects ABC	0	0	0%	0	0%	0	0%	
ANR	Analysis & Reporting	8	8	0%	8	0%	8	0%	
AP	Accounts Payable	7	7	0%	11	80%	23	100%	
AR	Accounts Receivable	8	8	0%	16	100%	34	110%	
GL	General Ledger	11	11	0%	33	200%	82	150%	
1000	Summary Group								
SP01	Special Projects	68	68	0%	72	10%	81	10%	
200	Research & Development								
PD	Product R & D	30	30	0%	30	0%	30	0%	
PT	Product Testing	2	2	0%	2	0%	2	0%	
300	Sales & Marketing								
SMA	Sales & Marketing Admin.	5	5	0%	11	120%	24	120%	
SS	Services and Support	6	6	0%	8	30%	12	60%	
WRS	Western Region Sales	21	21	0%	21	0%	21	0%	
400	Information & Technology								
MA	Management & Administration	15	15	0%	21	40%	34	60%	
500	Real Estate								
100	Corporate R&E	36	36	0%	68	90%	139	100%	

earnest development

13 Apr, 2021
Page 1 of 2
SAMPLE REPORT

Acme Research and Development Complex

New York, NY
40037.02

Ratios by SpaceType

Space Type		2021		MoveIn		2025		2030	
Space Standard		Qty	Ratio	Qty	Ratio	Qty	Ratio	Qty	Ratio
Total Headcount		252		252		372.22		641.02	
Collaborative		16	1 : 94.5	20	1 : 75.6	20	1 : 111.7	21	1 : 183.1
BREAK	Break Out	1	1 : 252	1	1 : 252	1	1 : 372.2	1	1 : 641
CA-01	Collaboration Area, Sm.	2	1 : 126	3	1 : 84	3	1 : 124.1	3	1 : 213.7
MTNG-01	Meeting Rm, Sm.	5	1 : 50.4	8	1 : 31.5	8	1 : 46.5	8	1 : 80.1
MTNG-02	Meeting Rm, Med.	5	1 : 50.4	5	1 : 50.4	5	1 : 74.4	6	1 : 106.8
MTNG-02	Meeting Rm, Med.	1	1 : 252	1	1 : 252	1	1 : 372.2	1	1 : 641
MTNG-03	Meeting Rm, Lg.	2	1 : 126	2	1 : 126	2	1 : 186.1	2	1 : 320.5

Private

PO-A	Office - Special
PO-B	Office - Large
PO-C	Office
QRA	Quiet room, Lg
WS.07	Workstation, shared

Open

WKST.09	Special Workstation
WS.01	Workstation
WS.03	Workstation
WS.04	Workstation
WS.06	Special Workstation
WS.08	Workstation X
WS-02	Workstation A
WS-10	Special Use Workstation
WS-10	Special Use Workstation

Special

WKST.22	Special Workstation
---------	---------------------

Support

CLOS-01	Handy Closet, S
CLOS-02	Handy Closet, L
EQ-01	Equipment Rm.
FILES	File Area
STOR-01	Storage Rm., Sm.
STOR-01	Storage Rm., Sm.

Acme Research and Development Complex

New York, NY
40037.02

Ratios by SpaceType

Space Type		2021		MoveIn		2025		2030	
Space Standard		Qty	Ratio	Qty	Ratio	Qty	Ratio	Qty	Ratio
Total Headcount		252		252		372		641	
Collaborative		16	1 : 94.5	20	1 : 75.6	20	1 : 111.7	21	1 : 183.1
BREAK	Break Out	1	1 : 252	1	1 : 252	1	1 : 372.2	1	1 : 641
CA-01	Collaboration Area, Sm.	2	1 : 126	3	1 : 84	3	1 : 124.1	3	1 : 213.7
MTNG-01	Meeting Rm, Sm.	5	1 : 50.4	8	1 : 31.5	8	1 : 46.5	8	1 : 80.1
MTNG-02	Meeting Rm, Med.	5	1 : 50.4	5	1 : 50.4	5	1 : 74.4	6	1 : 106.8
MTNG-02	Meeting Rm, Med.	1	1 : 252	1	1 : 252	1	1 : 372.2	1	1 : 641
MTNG-03	Meeting Rm, Lg.	2	1 : 126	2	1 : 126	2	1 : 186.1	2	1 : 320.5
Private		73	1 : 17.3	73	1 : 17.3	88	1 : 21.1	123	1 : 26.1
PO-A	Office - Special	12	1 : 21	12	1 : 21	14	1 : 26.6	23	1 : 27.9
PO-B	Office - Large	33	1 : 7.6	33	1 : 7.6	42	1 : 8.9	58	1 : 11.1
PO-C	Office	17	1 : 14.8	17	1 : 14.8	21	1 : 17.7	31	1 : 20.7
QRA	Quiet room, Lg	2	1 : 126	2	1 : 126	2	1 : 186.1	2	1 : 320.5
WS.07	Workstation, shared	9	1 : 28	9	1 : 28	9	1 : 41.4	9	1 : 71.2
Open		113	1 : 20.1	113	1 : 20.1	113	1 : 29.6	113	1 : 51.1
WKST.09	Special Workstation	7	1 : 36	7	1 : 36	7	1 : 53.2	7	1 : 91.6
WS.01	Workstation	28	1 : 9	28	1 : 9	28	1 : 13.3	28	1 : 22.9
WS.03	Workstation	11	1 : 22.9	11	1 : 22.9	11	1 : 33.8	11	1 : 58.3
WS.04	Workstation	6	1 : 42	6	1 : 42	6	1 : 62	6	1 : 106.8
WS.06	Special Workstation	3	1 : 84	3	1 : 84	3	1 : 124.1	3	1 : 213.7
WS.08	Workstation X	6	1 : 42	6	1 : 42	6	1 : 62	6	1 : 106.8
WS-02	Workstation A	37	1 : 6.8	37	1 : 6.8	37	1 : 10.1	37	1 : 17.3
WS-10	Special Use Workstation	5	1 : 50.4	5	1 : 50.4	5	1 : 74.4	5	1 : 128.2
WS-10	Special Use Workstation	10	1 : 25.2	10	1 : 25.2	10	1 : 37.2	10	1 : 64.1

earnest development

13 Apr, 2021
Page 1 of 2

SAMPLE REPORT

earnest development

13 Apr, 2021
Page 1 of 2

SAMPLE REPORT